

NOTE: If you receive a security warning, the "active content" used in this file enables the internet and document hyperlinks. To allow this, click the security banner (if present) and click "allow blocked content."



Military AI Works Republic of China Air Force Special Transports Package



Version: 1.0
For FS 2004 / FS9
Project Manager: Mark Campbell

This freeware AI package, produced by [Military AI Works](#) contains all aircraft belonging to the Republic of China Air Force's Presidential Flight and Special transports of the Sungshan AFB Command RCSS. The Sungshan AFB Command consists of one Boeing 737-800, three Fokker 50's and eleven B1900 aircraft. The Presidential Flight uses one Boeing 737-800 and 1 Fokker 50, the rest of fleet is assigned to the Special Transport Command which transport high ranking officers and officials around the Island, there are also two highly coloured B1900's used for Navaid calibration tests. The package includes the AIA Boeing 737-800, HTAI B1900 and PAI Fokker 50, repaints are by Graham King and the scenery for Sungshan AFB was placed using MAIW Scenery library objects by Tony Dalton and Mark Campbell.

Please Read: This package supersedes the previous MAIW / WOAI Republic of China package "WOAMIL8", you will need to uninstall this package or you will have duplicate Presidential Flight Boeing 737-800 flights.

Table of Contents (Use hyperlinks to navigate)

1. [About MAIW](#)
2. [Credits](#)
3. [Units Included in This Package](#)
4. [Installation](#)

5. [Troubleshooting](#)

6. [Notes and Resources](#)

7. [Permissions and Disclaimers](#)

1. About MAIW

Military AI Works (MAIW) is a loosely affiliated, international group of flightsim enthusiasts who share the common goal of seeing realistic military AI traffic in MS Flightsim. Our goals:

- 1) Produce only high-quality, freeware packages and products
- 2) Create military AI traffic accurately within the bounds of MS Flightsim
- 3) Promote new freeware military AI models, scenery and products
- 4) Advance military AI modeling of countries around the globe
- 5) Respect the rights of designers and contributors

To learn more about MAIW or to become a contributor, visit our website at <http://militaryaiworks.com/>.



2. Credits

AFCADs:

- Tony Dalton
- Mark Campbell
- Gary Barker

Models:

- Project AI
- Henry Tomkiewicz
- AI Ardvark

Repaints:

- Graham King

Voice Packs:

- Stewart Pearson

Flightplans:

- Mark Campbell

Custom Scenery:

- Edith Black
- John Stinstrom

Scenery Placement:

Tony Dalton
Mark Campbell

Serial Research:

- Mark Campbell



3. Units Included in this Package



Sungshan Air Base Command



Special Transport Squadron

Beech 1900 & Fokker 50



Presidential Flight Section

Boeing 737-8AR & Fokker 50



4. Installation

Step 1) Install this package

1) Install the package in accordance with the on-screen prompts

Step 2) Remove duplicate AFCAD files

Open your "Flight Simulator 9/Addon Scenery/scenery" folder and remove any previously installed AFCAD's for the following airports (e.g. "AF2_XXXX.bgl," "AF2_XXXX_DEFAULT_XX.bgl" or "PAI_AF2_XXXX_DEFAULT.bgl")

NOTE: LEAVE ALL AFCADS BEGINNING WITH "MAIW" as they were installed with step 1:

RCSS

NOTE: Failure to remove these duplicate files may result in problems with AI aircraft parking and operation. It is recommended you move these to a temporary folder instead of deleting them; however, you should not need them again as the AFCADs included in this package are thoroughly researched and highly detailed. If you are using add-on scenery for one of the above airfields, it is recommended you do NOT remove the AFCAD for the add-on scenery, but instead remove the MAIW AFCAD file (e.g. MAIW_XXXX_DEFAULT.bgl) after installation.

Step 3) Install callsign voicepacks

3a) If you don't have the EditVoicepack 3.1 freeware installed, download it and install it by [clicking here](#).

3b) Run EditVoicepack and import all vcpmod files included in with this installation

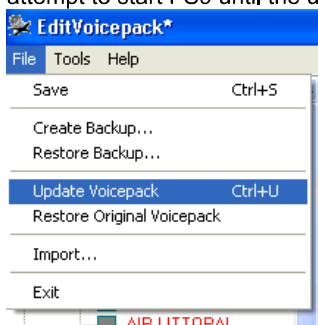
3c) Choose "Import" from the "File" menu

3d) Find the folder "Flight Simulator 9/Military AI Works/Taiwan/ROCAF/Taiwan Air Force Special Transports/Voicepack Callsigns" in the "Look in:" window

3e) Click "open" for each file

TAIWAN AIR FORCE

3f) Update the Voicepack for FS9 by choosing "Update Voicepack" from the "File" menu--ensure the "Custom/Callsigns" box is checked in the left hand window. (note: the update may take a few minutes--do not attempt to start FS9 until the update is complete. Look for "Ready" in the lower left corner)



3g) When ready press save to keep the modifications

Step 4) Scenery Installation:

The scenery for Sungshan AFB will be automatically placed into the correct directory for installation when you install this package.

1) The folders "MAIW ROCAF Airbases Scenery" and "MAIW Scenery Library Objects" have already been installed into the "Addon Scenery" folder of your FS directory. In order to activate this scenery you must start FS9, go to Settings and find the Scenery Library.

2) Click on "ADD AREA" and navigate to the "MAIW ROCAF Airbases Scenery" and "MAIW Scenery Library Objects" folders which should be, by default after installation, located in "Flight Simulator 9\Addon Scenery".

***Note it is important that you place the "MAIW Scenery Library Objects" folder as far down your addon scenery list as possible by using the Move Down button. Ideally they should be lower than any other scenery you may have added and just above the default FS9 scenery libraries.

3) Shut down FS and then when you restart the scenery will be installed and ready to use.

*** Please Note *** - The scenery enhancements included with this package are created from the MAIW Scenery Libraries, which are a collection of objects that can be used to enhance default FS airports. This scenery is not intended to be accurate, but instead to be a representation of the buildings situated at each base.

That's it! You've successfully installed this package. Your AI traffic files will be automatically updated the next time you run FS9



5. Troubleshooting

Problems addressed:

["I've installed the package, but there are no Military AI aircraft at the airports"](#)

["When I go to an airport, there are AI planes parked on top of one another"](#)

["I can't find the aircraft in the aircraft selection menu"](#)

["I'm following the Military AI aircraft, and they won't come back for touch-and-gos"](#)

Problem: “I’ve installed the package, but there are no Military AI aircraft at the airports”

Potential issue: FS9 AI traffic density set too low

Fix action: In FS9, set the AI traffic density slider to at least 10%.

Problem: “When I go to an airport, there are AI planes parked on top of one another”

Potential issue: Multiple AFCADs active for the same airport

Fix action: Using Windows Explorer, open the folder “Flight Simulator 9/Addon scenery/scenery.” Look for duplicate entries for the following airport identifier:

RCSS

Files may be named in several ways. The most common are “AF2_KXXX.bgl,” “AF2_KXXX_DEFAULT_XX.bgl” and “PAI_AF2_DEFAULT.bgl.” Keep the file names starting with MAIW and remove all others with duplicate airport identifiers.

Problem: “I can’t find the aircraft in the aircraft selection menu”

Issue: These are AI aircraft and have been programmed to not show up in the flyable aircraft selection menu

Fix action: If you simply must select these aircraft, use an editing program such as AirEd and change the Aircraft type from “2” to “0”

Problem: “When the Military AI planes talk to ATC, they use only numbers, not callsigns”

Potential issue: Callsign Voicepacks were not installed correctly

Fix action: Run the EditVoicepack software. Look for the following callsigns in the “custom modifications/callsigns” section of the program:

TAIWAN AIR FORCE

If any of these are missing, choose “File/import” and open the appropriate .vcpmo file in the folder:-
“Flight Simulator 9/Military AI Works/Taiwan/ROCAF/Taiwan Air Force Special Transports/Voicepack Callsigns”

Once this is complete, or if all callsigns are present, ensure the “Custom/Callsigns” box is checked in the left hand window and choose “File/Update Voicepack” to install them into FS9 (this may take a few minutes, do not open FS9 until the lower left of the EditVoicepack screen says “Ready.”)

Problem: “I’m following the Military AI aircraft, and they won’t come back for touch-and-gos”

Potential issue: You’re following your AI aircraft

Fix action: Stop following your AI aircraft. For some reason, a watched AI aircraft does not always behave the way it is programmed to. If you wait for the aircraft at the airport, it will arrive on schedule



6. Notes and Resources

This package was built by the [Military AI Works](#) online community. If you are interested in making Military AI traffic more realistic, visit this site!

Flightplans:

The flightplans are fictional, but have been researched via Internet and message forums. We have tried to make the plans as “realistic” as possible and have had to use our own judgment

All flightplans were created using [RPP_FPGen](#).

Flightplans were installed using Lee Swordy's [TrafficTools](#) freeware traffic compiler.

Callsigns:

The callsigns used in this package are based on information obtained in manuals and on internet.

All callsigns were created using the ingenious [EditVoicepack](#) freeware. This program is extremely simple and fun to use—if you need a new AI callsign, give it a try!

AFDs:

ADE9 files in this package were created using Airport Design Editor 9x [ADE9x](#).

***** Important*** It is highly recommend you do not open the file MAIW_ADE9_RCSS_Custom.BGL, for editing with any application other than ADE9. All scenery placement and excludes will be lost if the file is not opened with ADE9.**



7. Permissions and Disclaimers

Adverse Effects:

The contents of this package should not adversely affect your FS9 or computer operation if installed according to the instructions. The authors make no guarantee and bear no responsibility for adverse operation or lost/overwritten files on your computer.

Use of Contents:

THESE FILES MAY ONLY BE UPLOADED TO AVSIM or FLIGHTSIM.COM BY THE AUTHOR(S)

THESE FILES MAY NOT BE UPLOADED TO ANY OTHER SITE WITHOUT THE AUTHOR'S WRITTEN PERMISSION. THESE MODELS, REPAINTS AND FLIGHTPLANS ARE FREWARE AND MAY NOT BE SOLD, OR PUT ON ANY SITE THAT CHARGES FOR DOWNLOADING FREE FILES. THE FILES FOUND IN THIS ARCHIVE MAY NOT BE DISTRIBUTED ON CD OR ANY MEDIUM FOR ANY KIND OF FEE, INCLUDING THE COST OF PRODUCTION, MATERIALS OR POSTAGE. THE MODELS, REPAINTS AND FLIGHTPLANS OWNERSHIP REMAIN WITH THE AUTHORS AS MENTIONED IN THE PACKAGE

Upload to FSPLANET.com will never be allowed by Military AI Works.

Any questions, suggestions and feedback on the contents may be directed to the forums at <http://www.militaryaiworks.com/>

Sources:

All information used to create this package was obtained via online, open-source research and firsthand accounts from active duty service members. All flight plans and schedules, while reasonable for military units, are fictional.

